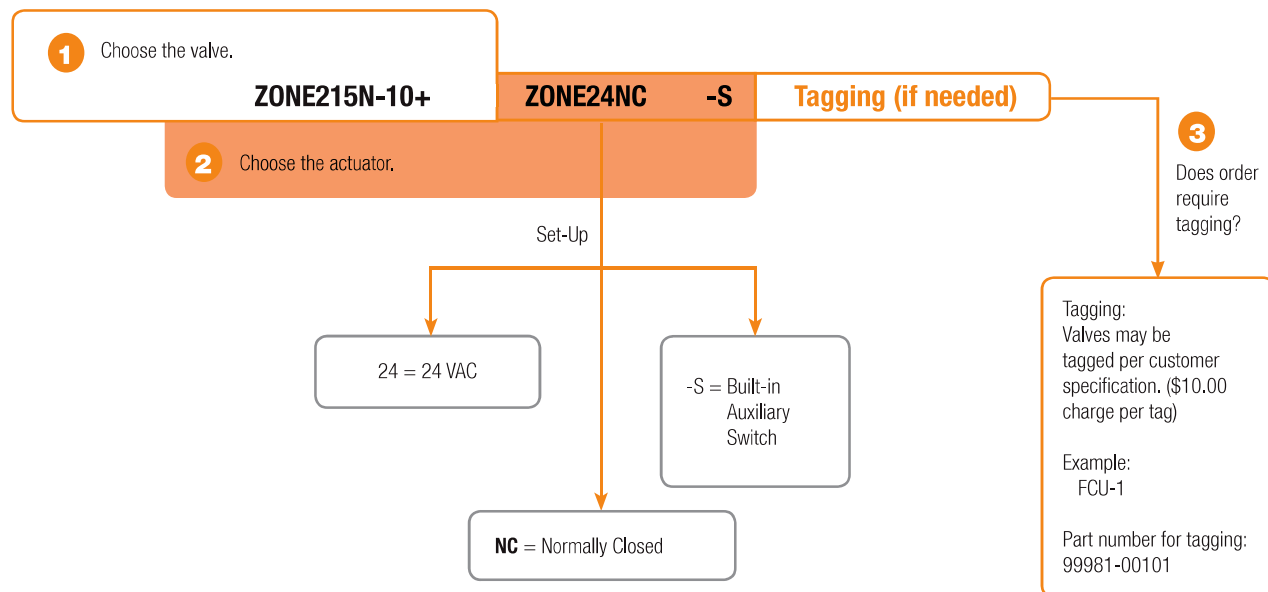


Zone Valve Nomenclature

ZONE2	15	N	-10	+ZONE24NC	-S
Valve Zone2 = 2-way Zone3 = 3-way	Valve Size 15 = ½" 20 = ¾" 25 = 1"	End Fitting N = NPT Female Connection S = Sweat Connection	Cv -10 = 1.0 -25 = 2.5 -35 = 3.5 -50 = 5.0 -80 = 8.0	Actuator Type 24NC = 24 Volt Normally Closed 24NO = 24 Volt Normally Open 120NC = 120 Volt Normally Closed 120NO = 120 Volt Normally Open	-S = Built-in Auxiliary Switch

Ordering Example



4 Complete Ordering Example: ZONE215N-10+ZONE24NC-S

Control Valve Product Range

Zone Valve Product Range

C _v	Valve Nominal Size		Type		Suitable Actuators			
	Inches	DN [mm]	2-way NPT	2-way Sweat	Normally Closed		Normally Open	
1	½	15	ZONE215N-10	ZONE215S-10	Zone	Zone (with Switch)	Zone	Zone (with Switch)
2.5	½	15	ZONE215N-25	ZONE215S-25				
3.5	½	15	ZONE215N-35	ZONE215S-35				
3.5	¾	20	ZONE220N-35	ZONE220S-35				
5	¾	20	ZONE220N-50	ZONE220S-50				
8	1	25	ZONE225N-80	ZONE225S-80				



C _v	Valve Nominal Size		Type		Suitable Actuators	
	Inches	DN [mm]	3-way NPT	3-way Sweat	Normally Closed	
1	½	15	ZONE315N-10	ZONE315S-10	Zone	Zone (with Switch)
2.5	½	15	ZONE315N-25	ZONE315S-25		
3.5	½	15	ZONE315N-35	ZONE315S-35		
3.5	¾	20	ZONE320N-35	ZONE320S-35		
5	¾	20	ZONE320N-50	ZONE320S-50		
8	1	25	ZONE325N-80	ZONE325S-80		

Mode of Operation

Zone valves provide a convenient way to create individual zones or equipment isolation in a hydronic system. Utilizing one pump along with multiple zone valves, flow can be started, stopped, or diverted through the system to provide individual room or area comfort control and energy savings.

Product Features

Zone valve is designed to fit in compact areas where on/off control is required using 24 VAC or 120 VAC.

Actuator Specifications

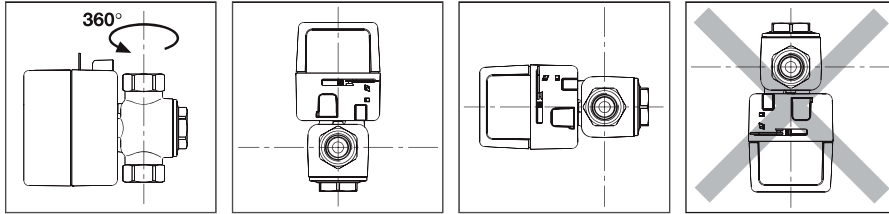
Control type	on/off
Manual override	NC versions only
Electrical connection	6" [15 cm] wire lead 120V; 18" [45 cm] wire lead 24V

Valve Specifications

Service	chilled or hot water, 50% glycol
Flow characteristic	
Two-way	on/off
Three-way	on/off, diverting
Sizes	½", ¾" and 1"
End fitting	NPT female or sweat
Materials	
Body	forged brass
Stem	stainless steel
Stem seals	EPDM
Paddle	EPDM
Media temp range	32°F to 212°F [0°C to 100°C]
Body pressure rating	300 psi
Close-off pressure	20-75 psi
Leakage	ANSI Class III 0.1%

MOUNTING ORIENTATION

The valve can be installed vertically or horizontally, but not below horizontal.

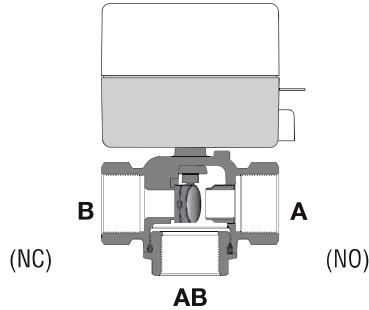
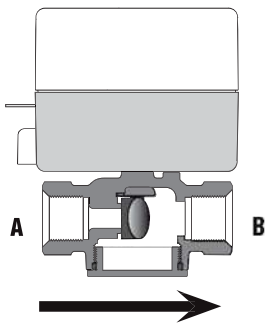


- A 3-way valve cannot be transformed into a 2-way valve and visa versa.
- The NC versions have an override handle.
- 3-way zone valves can be fitted with NC actuator only (rotate the valve body 180° for NO application).

FLOW PATTERN

2-way Valve

3-way Valve

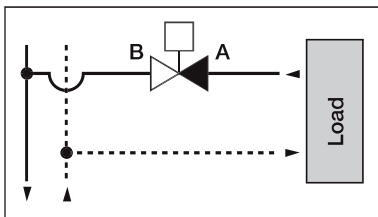


	2-WAY	3-WAY
N.C. without power	Port "A" closed	Port "A" closed Port "B" open Port "AB" open
N.C. open with power	Port "A" open	Port "A" open Port "B" closed Port "AB" open
N.C. manually open	Port "A" open	Port "A" open Port "B" open Port "AB" open

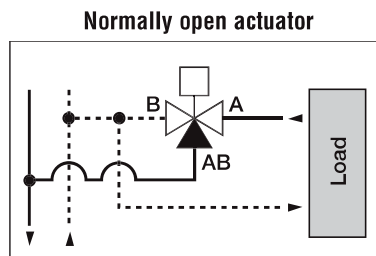
Normally closed actuator

Normally closed actuator

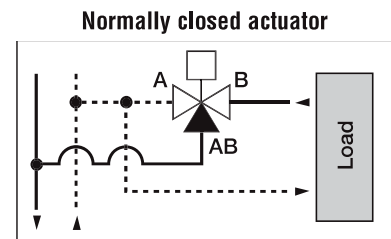
PIPING DIAGRAMS



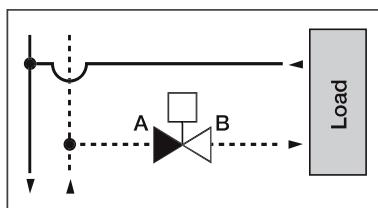
Installed on the return



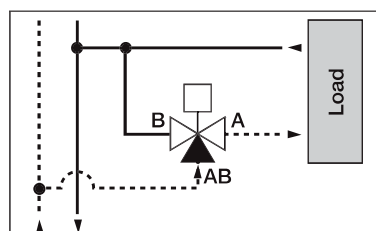
Installed on the return in diverting configuration



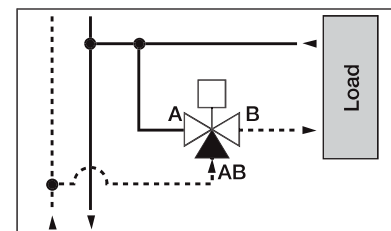
Installed on the return in diverting configuration



Installed on the supply



Installed on the supply



Installed on the supply



Valve Specifications

Service	chilled or hot water, up to 50% glycol
Flow Characteristic	on/off (2-way) on/off, diverting (3-way)
End Fitting	NPT female sweat
Body	forged brass
Stem	stainless steel
Seat	brass
Stem Seal	EPDM
Paddle	EPDM
Media Temperature Range (Water)	32°F to 212°F [0°C to 100°C]
Leakage	ANSI Class III 0.1%



ZONE VALVES

ACTUATOR PART #	ZONE24NC	ZONE24NO	ZONE24NC-S	ZONE24NO-S
Control	On/Off	On/Off	On/Off	On/Off
Manual Override	•		•	
Running Time (Motor)	20 to 40 seconds	20 to 40 seconds	20 to 40 seconds	20 to 40 seconds
Running Time (Fail-Safe)	5 seconds	5 seconds	5 seconds	5 seconds
Electrical Connection	18" wire leads	18" wire leads	18" wire leads	18" wire leads

2-Way with NPT Female Connection

Model #	Cv	Size [mm]	Body Pressure Rating [psi]	Close-Off Pressure [psi]				
ZONE215N-10	1	0.5" [15]	300	75	\$255	\$255	\$277	\$277
ZONE215N-25	2.5			50	\$255	\$255	\$277	\$277
ZONE215N-35	3.5			30	\$255	\$255	\$277	\$277
ZONE220N-35	3.5	0.75" [20]		30	\$283	\$283	\$305	\$305
ZONE220N-50	5			25	\$283	\$283	\$305	\$305
ZONE225N-80	8			1" [25]	20	\$363	\$363	\$386

3-Way with NPT Female Connection

ZONE315N-10	1	0.5" [15]	300	75	\$283		\$305	
ZONE315N-25	2.5			50	\$283		\$305	
ZONE315N-35	3.5			30	\$283		\$305	
ZONE320N-35	3.5	0.75" [20]		30	\$304		\$325	
ZONE320N-50	5			25	\$304		\$325	
ZONE325N-80	8			1" [25]	20	\$389		\$410

2-Way with Sweat Connection

ZONE215S-10	1	0.5" [15]	300	75	\$247	\$247	\$271	\$271
ZONE215S-25	2.5			50	\$247	\$247	\$271	\$271
ZONE215S-35	3.5			30	\$247	\$247	\$271	\$271
ZONE220S-35	3.5	0.75" [20]		30	\$283	\$283	\$305	\$305
ZONE220S-50	5			25	\$283	\$283	\$305	\$305
ZONE225S-80	8			1" [25]	20	\$352	\$352	\$375

3-Way with Sweat Connection

ZONE315S-10	1	0.5" [15]	300	75	\$271		\$294	
ZONE315S-25	2.5			50	\$271		\$294	
ZONE315S-35	3.5			30	\$271		\$294	
ZONE320S-35	3.5	0.75" [20]		30	\$296		\$318	
ZONE320S-50	5			25	\$296		\$318	
ZONE325S-80	8			1" [25]	20	\$375		\$396

Three-way valve can be installed in NC or NO configuration using the NC actuator.

T15000-04/18 - Subject to change. © Belimo Aircontrols (USA), Inc. All prices are in Canadian Dollars (CAD)

Electronic Zone Valves with Spring Return Actuators

2-way and 3-way Valves with NPT or Sweat Connection



Valve Specifications

Service	chilled or hot water, up to 50% glycol
Flow characteristic	on/off (2-way) on/off, diverting (3-way)
End Fitting	NPT female sweat
Body	forged brass
Stem	stainless steel
Seat	brass
Stem Seal	EPDM
Paddle	EPDM
Media Temperature Range (Water)	32°F to 212°F [0°C to 100°C]
Leakage	ANSI Class III 0.1%



ACTUATOR PART #	ZONE120NC	ZONE120NO	ZONE120NC-S	ZONE120NO-S
Control	On/Off	On/Off	On/Off	On/Off
Manual Override	•		•	
Running Time (Motor)	20 to 40 seconds	20 to 40 seconds	20 to 40 seconds	20 to 40 seconds
Running Time (Fail-Safe)	5 seconds	5 seconds	5 seconds	5 seconds
Electrical Connection	6" wire leads	6" wire leads	6" wire leads	6" wire leads

2-Way with NPT Female Connection

Model #	Cv	Size [mm]	Body Pressure Rating [psi]	Close-Off Pressure [psi]					
ZONE215N-10	1	0.5" [15]	300	75	\$255		\$255	\$277	\$277
ZONE215N-25	2.5			50	\$255		\$255	\$277	\$277
ZONE215N-35	3.5	30		\$255		\$255	\$277	\$277	
ZONE220N-35	3.5	0.75" [20]		30	\$283		\$283	\$305	\$305
ZONE220N-50	5			25	\$283		\$283	\$305	\$305
ZONE225N-80	8			1" [25]	20	\$363		\$363	\$386

3-Way with NPT Female Connection

ZONE315N-10	1	0.5" [15]	300	75	\$283		\$305			
ZONE315N-25	2.5			50	\$283		\$283	\$305		
ZONE315N-35	3.5	30		\$283		\$283	\$305			
ZONE320N-35	3.5	0.75" [20]		30	\$304		\$304	\$325		
ZONE320N-50	5			25	\$304		\$304	\$325		
ZONE325N-80	8			1" [25]	20	\$389		\$389	\$410	

2-Way with Sweat Connection

ZONE215S-10	1	0.5" [15]	300	75	\$247		\$247	\$271	\$271
ZONE215S-25	2.5			50	\$247		\$247	\$271	\$271
ZONE215S-35	3.5	30		\$247		\$247	\$271	\$271	
ZONE220S-35	3.5	0.75" [20]		30	\$283		\$283	\$305	\$305
ZONE220S-50	5			25	\$269		\$269	\$292	\$292
ZONE225S-80	8			1" [25]	20	\$352		\$352	\$375

3-Way with Sweat Connection

ZONE315S-10	1	0.5" [15]	300	75	\$271		\$294			
ZONE315S-25	2.5			50	\$271		\$271	\$294		
ZONE315S-35	3.5	30		\$271		\$271	\$294			
ZONE320S-35	3.5	0.75" [20]		30	\$296		\$296	\$318		
ZONE320S-50	5			25	\$296		\$296	\$318		
ZONE325S-80	8			1" [25]	20	\$375		\$375	\$396	

Three-way valve can be installed in NC or NO configuration using the NC actuator.

T15000-04/18 - Subject to change. © Belimo Aircontrols (USA), Inc. All prices are in Canadian Dollars (CAD)